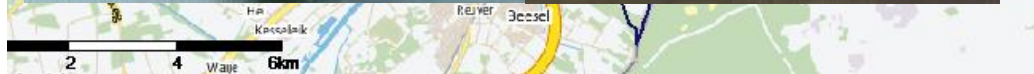


A map of the Venlo region in the Netherlands, showing the city of Venlo and surrounding areas like Arcen, Lumen, Tegelen, and Beek. The map is overlaid with a blue outline of the city's administrative boundary and a yellow outline of a larger regional boundary. Major roads are shown in yellow and red, and water bodies in blue. The text "Ervaringen nieuwe sanitatie" is centered over the map.

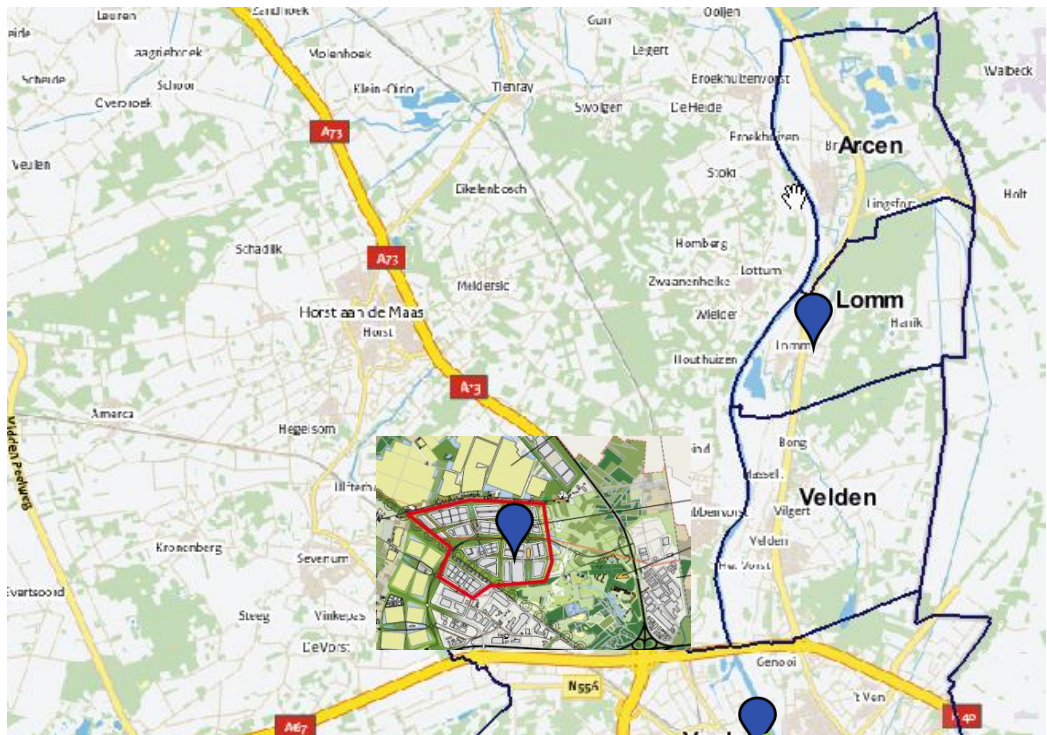
Ervaringen nieuwe sanitatie

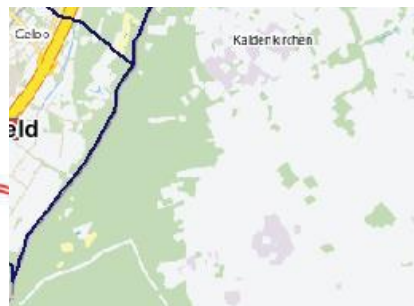
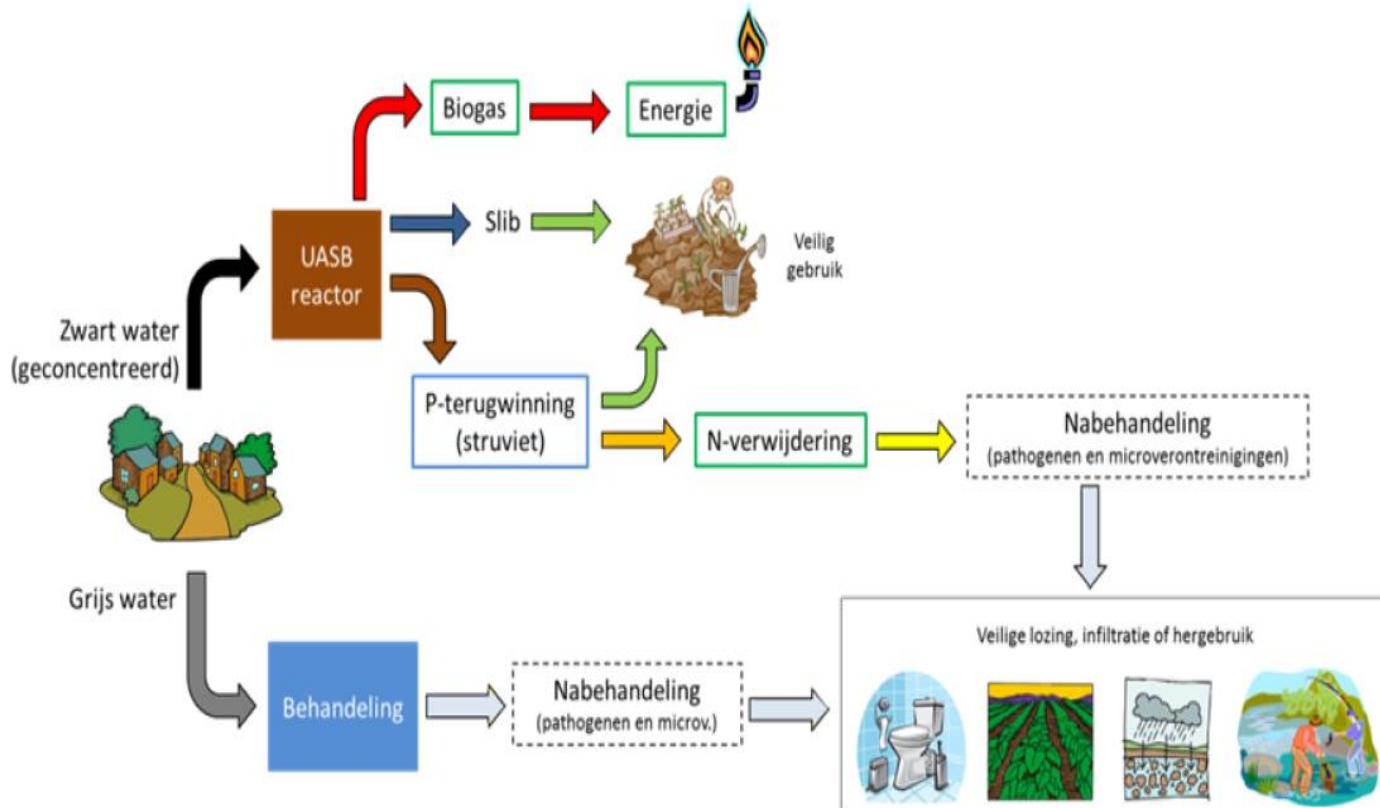
19-11-2018
Ruud van Weert
Gemeente Venlo
Beleidsmedewerker
stedelijk waterbeheer

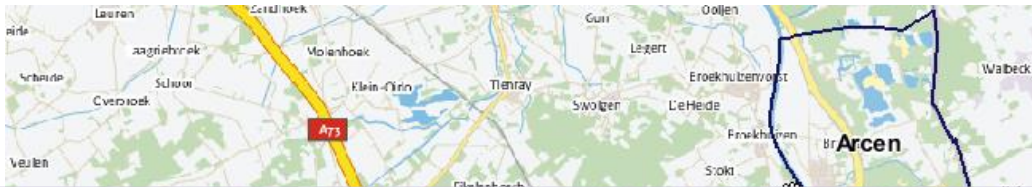




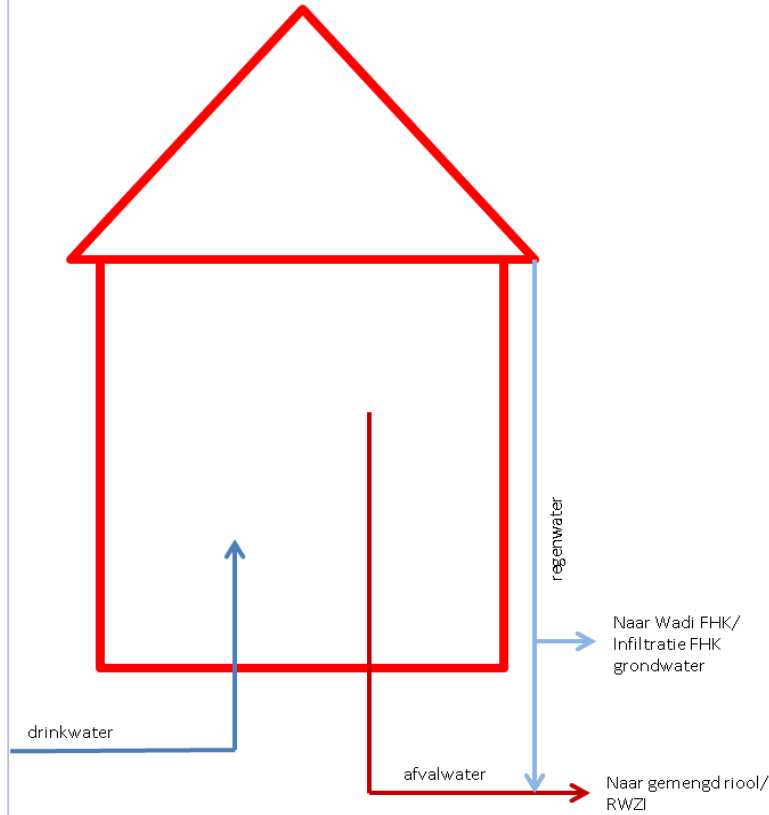






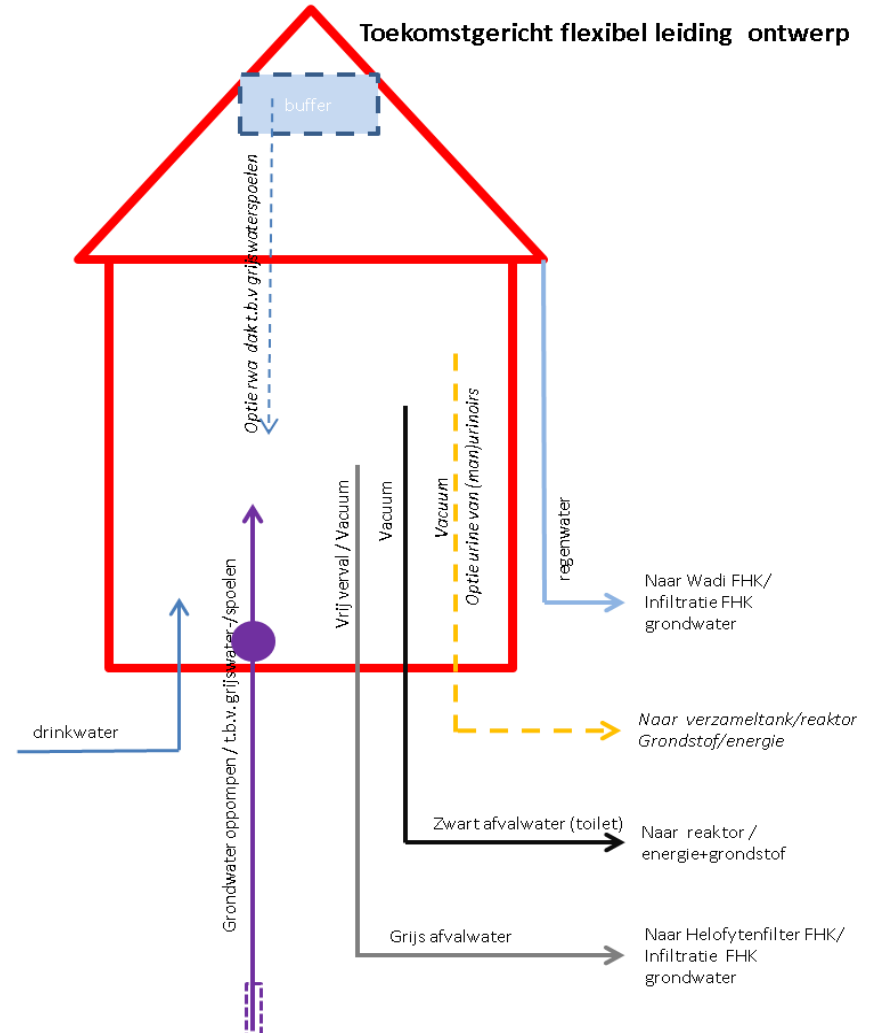


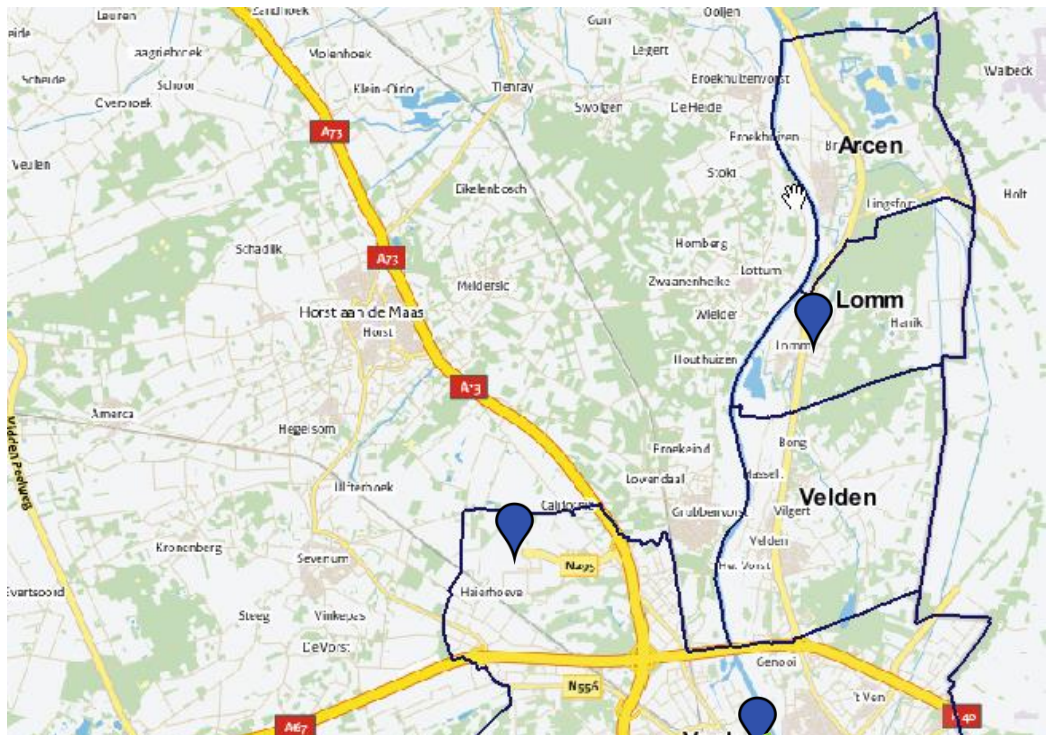
Sanitatie FHK bestaand

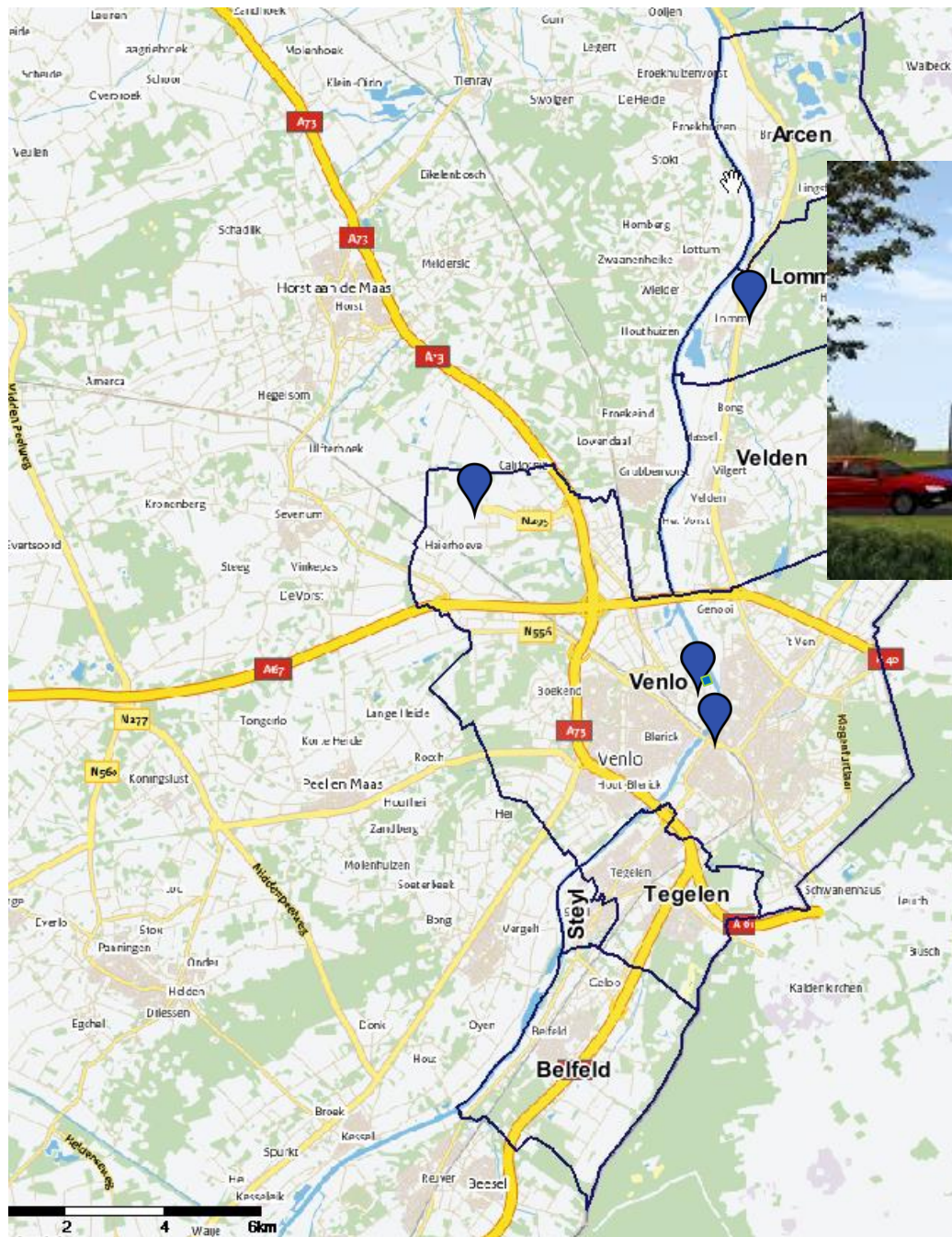


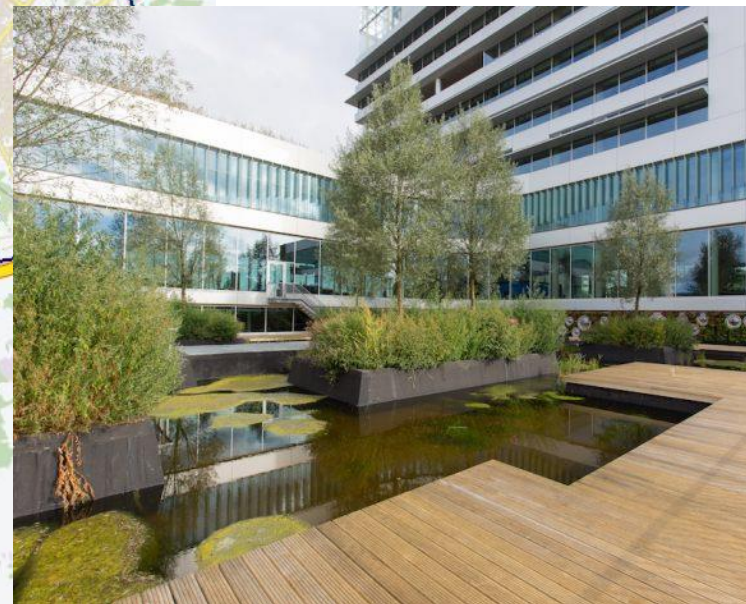
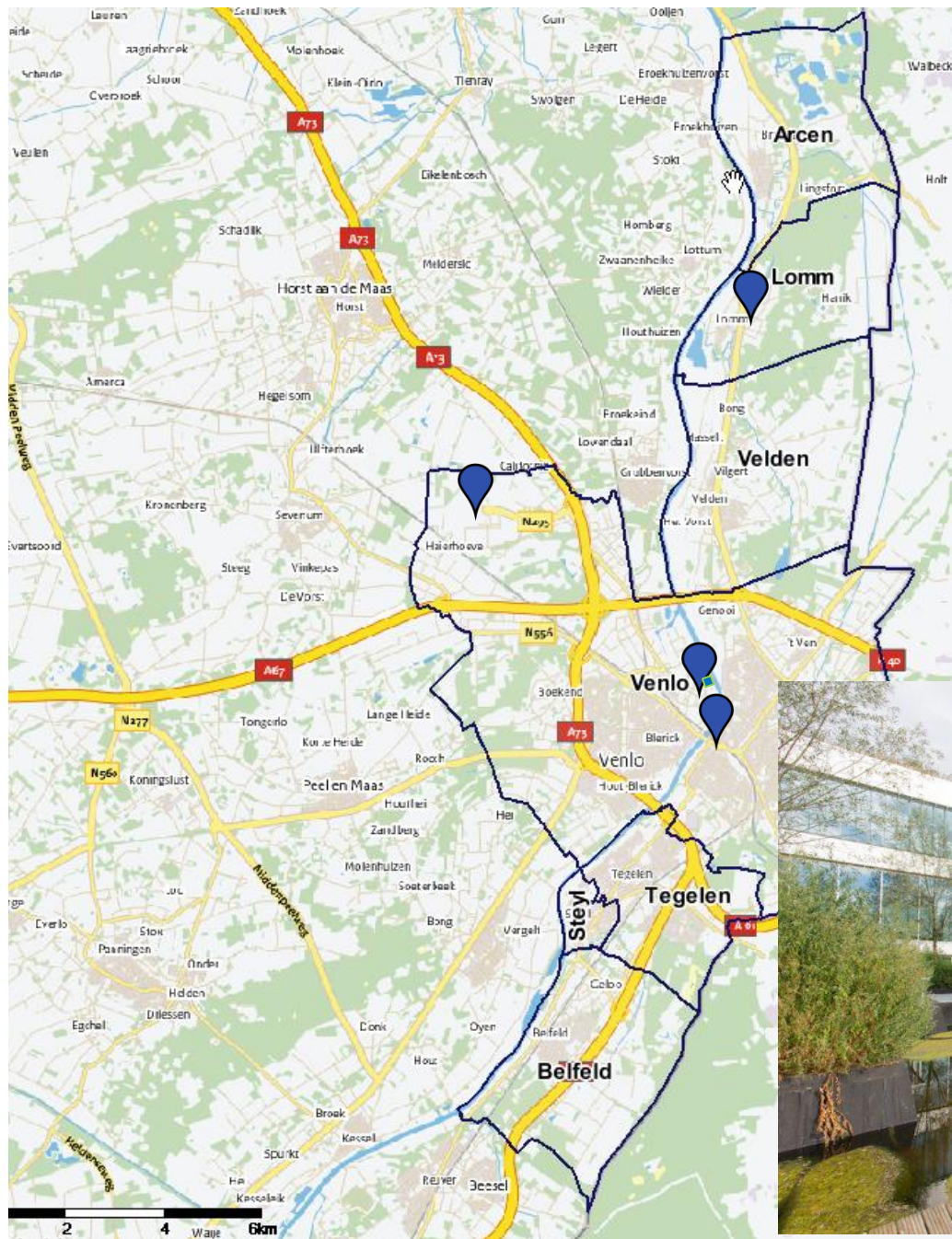
Nieuwe sanitatie C2C FHK gebouwniveau

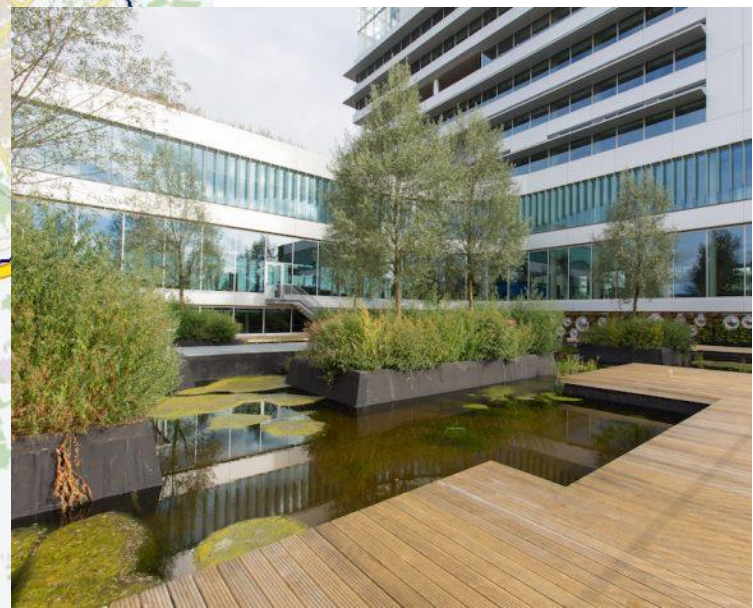
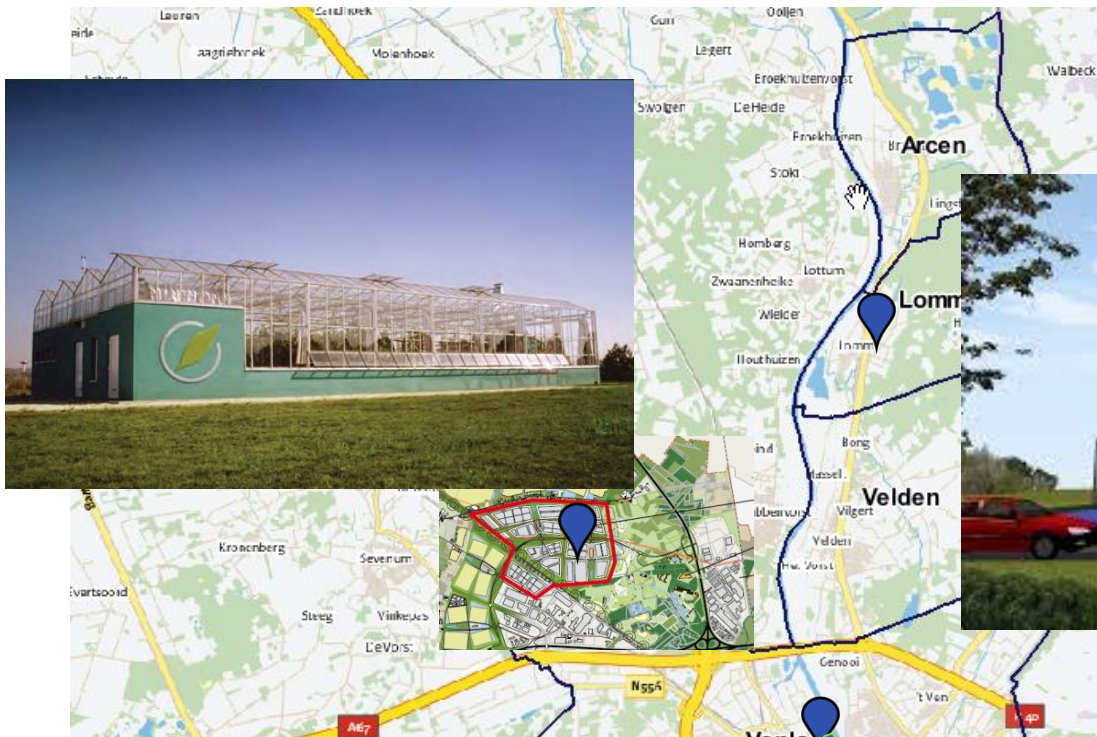
Toekomstgericht flexibel leiding ontwerp











Ervaringen/conclusies/inzichten

