

Aquatic microbiomes: Impact in natural and man-made ecosystems



symposium

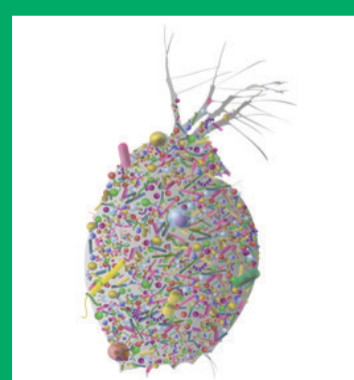
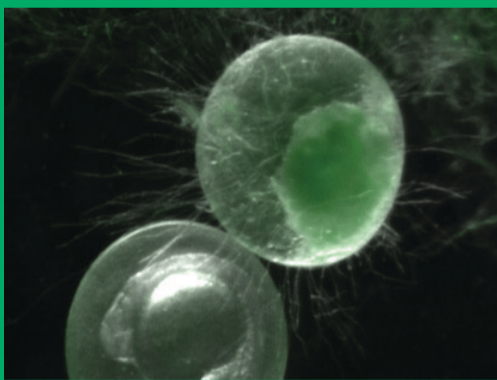
28 June 2019

Programme

- 9:30 **Registration**
Chair: **Paul Bodelier & Annelies Veraart**
- 10:15 Opening
- 10:20 **Jason Woodhouse** (Leibniz Institute for Freshwater Biology and Inland Fisheries, Berlin): Microbiome research in aquatic ecosystems.
- 10:45 **Luc Hornstra** (KWR Watercycle Research Institute): Antimicrobial resistance and aquatic environments, consequences for drinking water production?
- 11:10 **Break**
- 11:40 **Laura Dijkhuizen** (Utrecht University): Partners & Passengers: The endophytic microbes persistent across the genus *Azolla*.
- 12:05 **Eric Hester** (Radboud University Nijmegen): The rhizosphere microbial community of the wetland plant *Juncus acutiflorus* under elevated nitrogen load.
- 12:30 **Lunch break + optional tour**
- 13:45 **Ellen Decaestecker** (Catholic University of Leuven): The *Daphnia* microbiome and host genotype as interactors in cyanobacterial tolerance.
- 14:10 **Detmer Sipkema** (Wageningen University & Research): Deep Impact: sponge-associated microbes and antimicrobial activity change with depth.
- 14:35 **Irene de Bruijn** (Koppert Biological Systems BV & NIOO-KNAW): Beneficial microbes to combat diseases in salmon aquaculture.
- 15:00 **Break**
- 15:30 **Cornelia Welte** (Radboud University Nijmegen): Methane cycling in Arctic thermokarst lakes.
- 15:55 **Jeanine Geelhoed** (University of Antwerp): The electric microbiome: microbial ecology of cable bacteria in sediments.
- 16:20 **Closing remarks**
- 16:30 **Drinks**

Location

Netherlands Institute of Ecology
Droevendaalsesteeg 10
6708 PB Wageningen



Registration fee: There will be no costs for attending the symposium

Participants need to register at:
www.wetland-ecology.nl

The CWE is a network of fundamental science groups in universities and academic research institutes on all aspects of wetland science. It aims at enhancing the interaction between the worlds of fundamental research and management implementation regarding wetlands and water bodies.



Radboud University Nijmegen



UNIVERSITY OF AMSTERDAM

